

# Andy Griffith Episode - Skeet Shooting at Chatsworth Park South



1961, Gail Davis and Andy Griffith skeet shooting at the Roy Rogers Sports Center, today's Chatsworth Park South

Gail Davis starred in 81 episodes of the "Annie Oakley" TV series from 1954 to 1957.

Andy Griffith starred in 249 episodes of the "Andy Griffith Show" TV series from 1960 to 1968

# Introduction

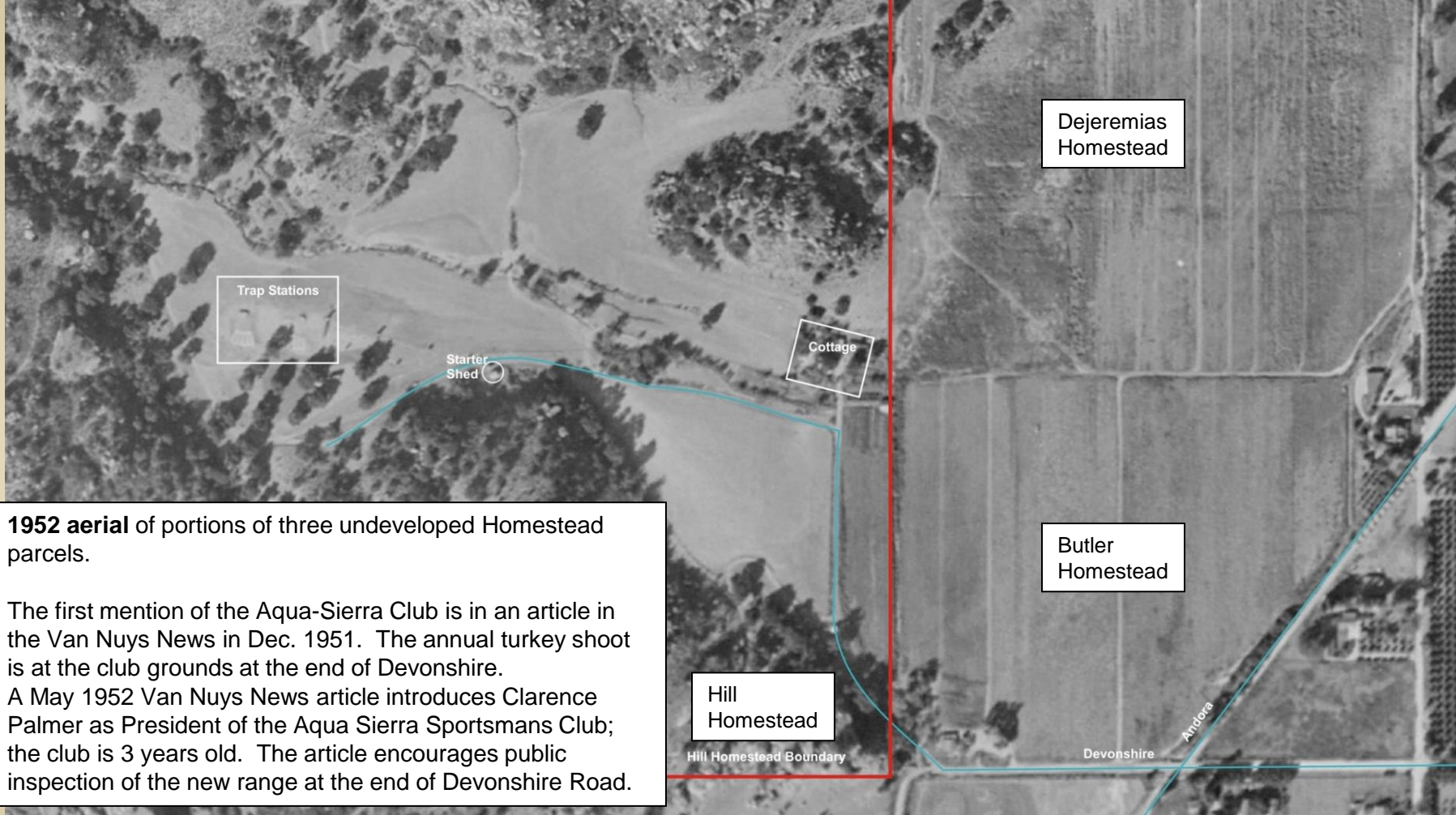
In 2016, we made a presentation on "[Aqua Sierra and the Roy Rogers Sports Center](#)".

This presentation will include a recap of that presentation, followed by a 1961 episode of the Andy Griffith Show, filmed at the Skeet Shooting range at the Roy Rogers Sport Center.

Portions of three undeveloped homestead parcels were combined from 1951 to 1969 to create a 127 acre sports center at the west end of Devonshire, on what is today's Chatsworth Park South and part of Rockpointe.

The Sports Center included a Shooting Range, Golf Courses, and Fishing Lakes.

This presentation will be posted at our website, [chatsworthhistory.com](http://chatsworthhistory.com), Digital Archives, Presentations.



**1952 aerial** of portions of three undeveloped Homestead parcels.

The first mention of the Aqua-Sierra Club is in an article in the Van Nuys News in Dec. 1951. The annual turkey shoot is at the club grounds at the end of Devonshire.

A May 1952 Van Nuys News article introduces Clarence Palmer as President of the Aqua Sierra Sportsmans Club; the club is 3 years old. The article encourages public inspection of the new range at the end of Devonshire Road.

# The Expansion of Aqua Sierra Facilities - 1955 to 1960

- The Aqua Sierra Sportmans Club facilities began in 1951, but the organization was having some issues in the early years.
- In 1955/56, Heinrich Berkenkamp (known by all as “Berky”, and one of three partners of the very successful Oroweat Bakeries) helped out the club by buying the 230 acre Hill Homestead. The deed granted a life tenancy agreement for Minnie Hill Palmer to live rent and tax free at her 1913 cottage and surrounding 1.3 acre grounds.
- Coincidentally, in 1955, Roy Rogers moved to Chatsworth from Encino and bought the 129 acre Paulson Homestead at the end of Lassen, renaming it the Double R Bar Ranch.
- Both Berky and his wife Charlotte shot at Aqua Sierra. Their son Karl remembers Clarence Palmer, as sort of a promoter, and that he ran the operation. Berky bought the land as an investment, but also to help out the club. Roy Rogers was involved as well in some way, and in 1959 it was advertised as the Roy Rogers Sports Center.





**1959 aerial** -- Aqua Sierra Sportsmans Club and the Roy Rogers Sports Center  
In **1956**, a 2-acre trout lake was completed, with a second smaller trout lake for kids.  
By **1958**, the skeet and trap ranges are expanded from two to five; Roy Rogers is interviewed and shares that he operates the Aqua Sierra Gun Club, a skeet and trap shooters dream with a 90-foot Hi-Tower.  
By **1959**, a nine hole, 27 par golf course and driving range (the "white" course) is completed.

# Trap Shooting 101 - Introduction

- Before we go further, we need to explain the sport of Trap and Skeet shooting.
- Trap and skeet shooting are two disciplines of clay pigeon shooting (shotgun shooting at clay targets).
- Competitions involve shooting 25 shots, which is how many shotgun shells are in a box.
- Equipment required is a shotgun, clay targets, and a clay target launcher.



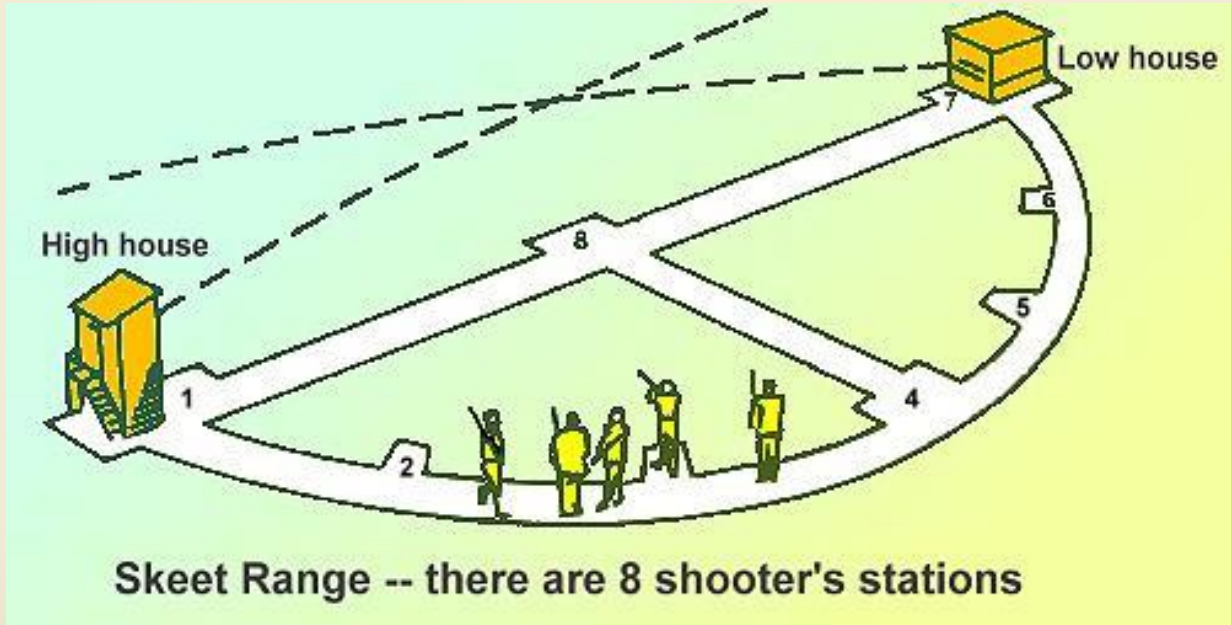
# Trap Shooting 101 - Trap

- In trap shooting, there are 5 shooting positions and one trap. The clay target thrower or trap machine is positioned in a structure, called the trap house, 2½ feet below the ground, 16 yards in front of the stations. The trap machine oscillates left to right and back, launching a single clay target, or bird. The five shooting stations or paths radiating out from behind the trap house are marked with distances from its leading edge from 16 to 27 yards.



# Skeet Shooting 101 - Skeet

- In skeet shooting, there are 8 shooting positions and two traps. Targets are launched from two "houses" in somewhat "sideways" paths that intersect in front of the shooter. The two traps are called a "high house" (10 ft above the ground) and a "low house" (3 ft above ground).
- Trap stations usually are combined with a high and low house, so you can shoot either trap or skeet at a single station.



**Skeet Range -- there are 8 shooter's stations**



Next..... A two-minute  
1959 Chevrolet  
Commercial

Trap Shooting at the Roy  
Rogers Sports Center

Available on YouTube as  
“1959 Chevrolet Truck  
Commercial Roy Rogers”

<https://youtu.be/rBhqFjyLwbc>

Note the flag pole in the 1959  
commercial, which remains today  
in Chatsworth Park South



A two-minute  
1959 Chevrolet  
Commercial

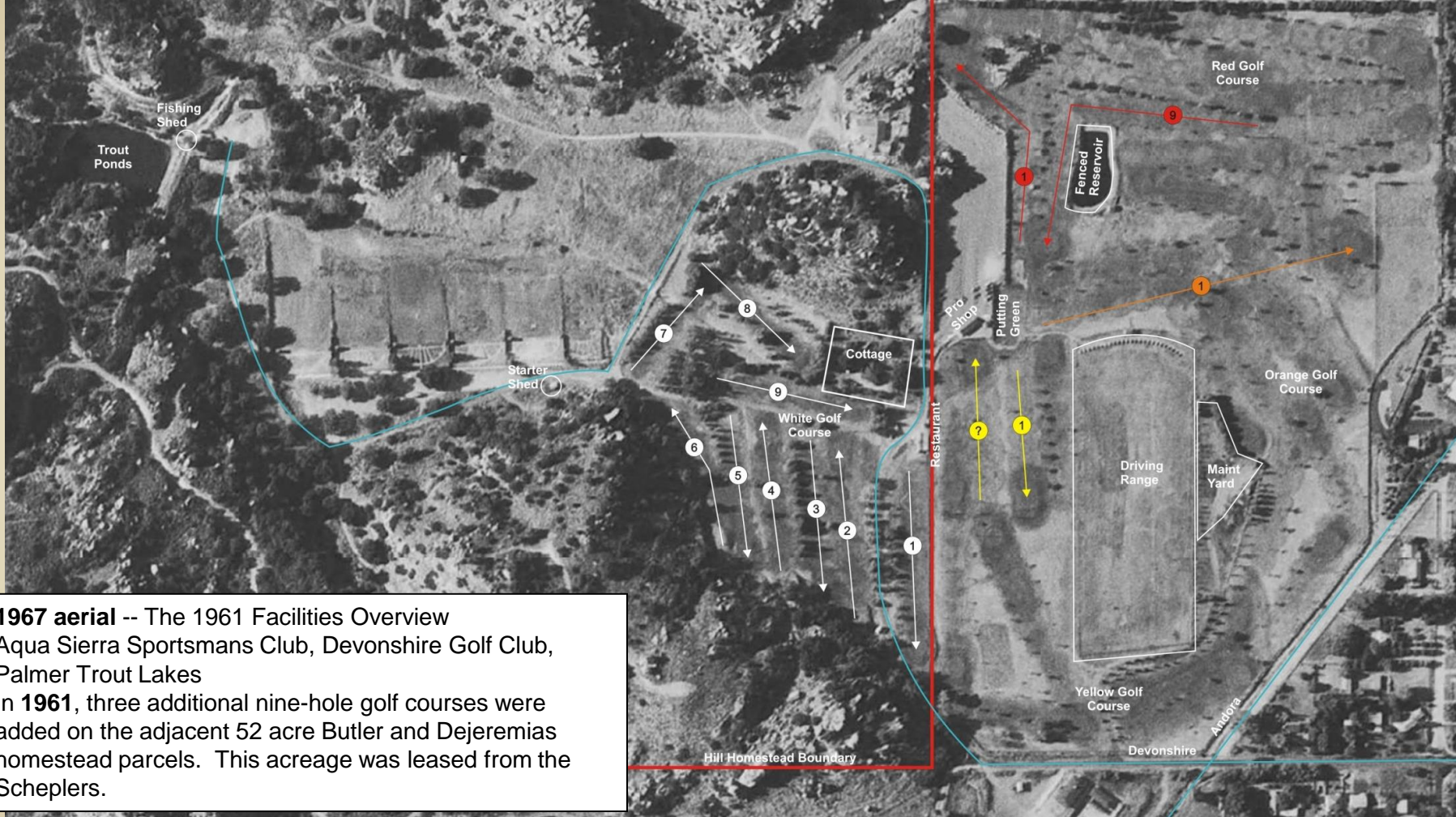
Trap Shooting at the  
Roy Rogers Sports  
Center



On Youtube, search  
“chatsworthhistory1”

03/19/2024 Chatswort





**1967 aerial** -- The 1961 Facilities Overview Aqua Sierra Sportsmans Club, Devonshire Golf Club, Palmer Trout Lakes  
 In **1961**, three additional nine-hole golf courses were added on the adjacent 52 acre Butler and Dejeremias homestead parcels. This acreage was leased from the Scheplers.



**1969 aerial** -- The decline of the sports center began in 1968, when Rockpointe began development on the Butler/Dejeremias homestead parcels. In **1973** the City of Los Angeles purchased the 75 acre skeet/fishing/golf course site and it became today's Chatsworth Park South. Notice that the Golf Pro Shop was moved to Minnie's 1.3 acre parcel, which is today the Chatsworth Historical Society Museum.

# A Few Photos from the Sports Center

1965  
Devonshire Golf Club  
Chamber of  
Commerce Book

The site of three  
nine-hole par 3  
courses, the first  
course having been  
opened for play in  
1958.

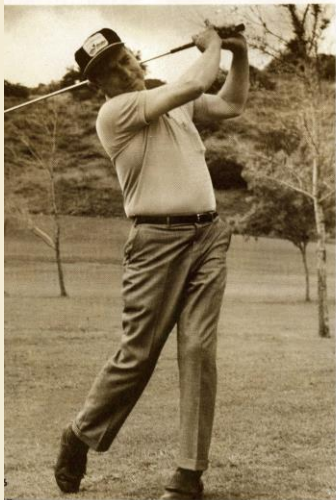

**Devonshire Golf Club**

At the extreme west end of Devonshire Street lies one of Chatsworth's finest recreational facilities, the Devonshire Golf Club. Under the supervision of Douglas C. Palmer, this verdant hilly acreage is the site of three nine-hole par 3 courses; the first course having been opened for play in 1958. Golfing equipment and supplies may be purchased at the pro shop maintained on the premises. A restaurant is also available for your convenience.

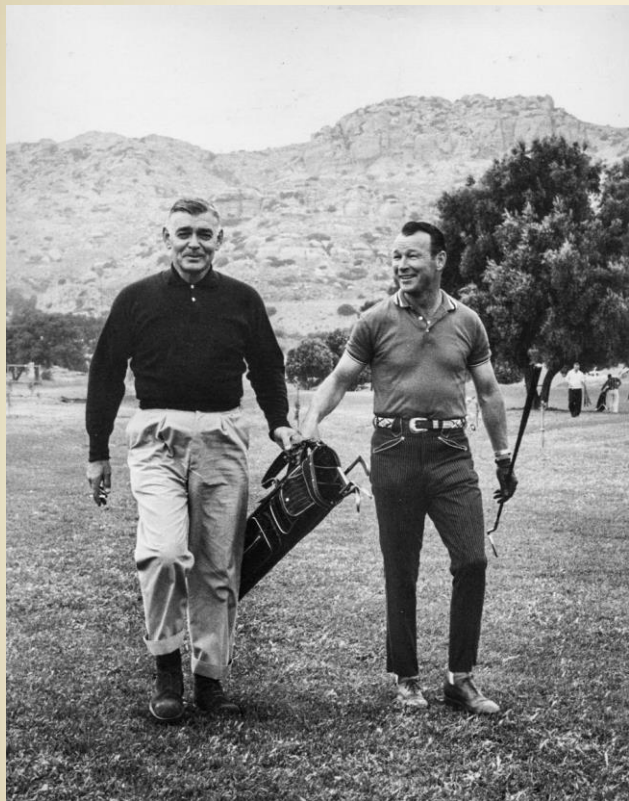
Gun club facilities, first initiated by Clarence A. Palmer in 1950 are offered at the Aqua Sierra Gun Club tucked back among the Santa Susana Mountains. Trap, skeet and high tower shooting are available at this beautiful setting.

You are invited to chuck your problems for a day and visit this multi-purpose recreational center.

Golf Club Phone: 341-1460      Gun Club Phone: 341-9052



# A Few Photos from the Sports Center



1958 - Clark Gable and Roy Rogers playing golf in Chatsworth



The May 1959 Devonshire Golf Course official opening at Roy Roger's Sports Center in Chatsworth. Pictured from left are Pat Brady, Ashley Lofea, host pro; Peter Graves, Roy Rogers, Pat Knowles and Jackie Cooper.

# A Few Photos from the Sports Center

Circa 1955  
postcard of the  
Aqua Sierra  
Sportsmans  
Club

Source: CSUN  
digital archives

Five skeet and  
trap stations,  
and the skeet  
hi-tower in  
foreground.

Notice sidewalk  
behind stations,  
still in existence  
today.



West Valley Museum

# A Few Photos from the Sports Center

1964

Trap Shooting  
Club  
from the  
Wanamaker  
Jerry England  
collection

Note the skeet  
high house at left,  
the skeet low  
house at right.  
And the trap  
house in the  
middle.





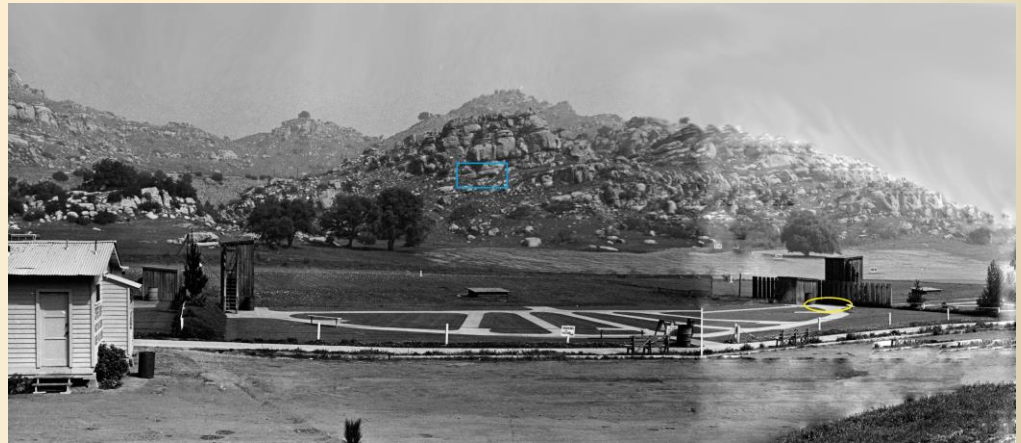
# Dennis Liff matches a scene to background rocks



The final shotgun match scene, shot in 1961, is compared to Google Maps today and the 1964 Wannamaker/England collection photo.

Upper right -- The blue and red rectangles in the photo above match background rocks in Google Maps in the upper right.

Lower right -- The blue rectangle is identified. And the location of where the people are standing is the yellow oval. Which is the right edge of skeet and trap range #4.



# A Few Photos from the Sports Center

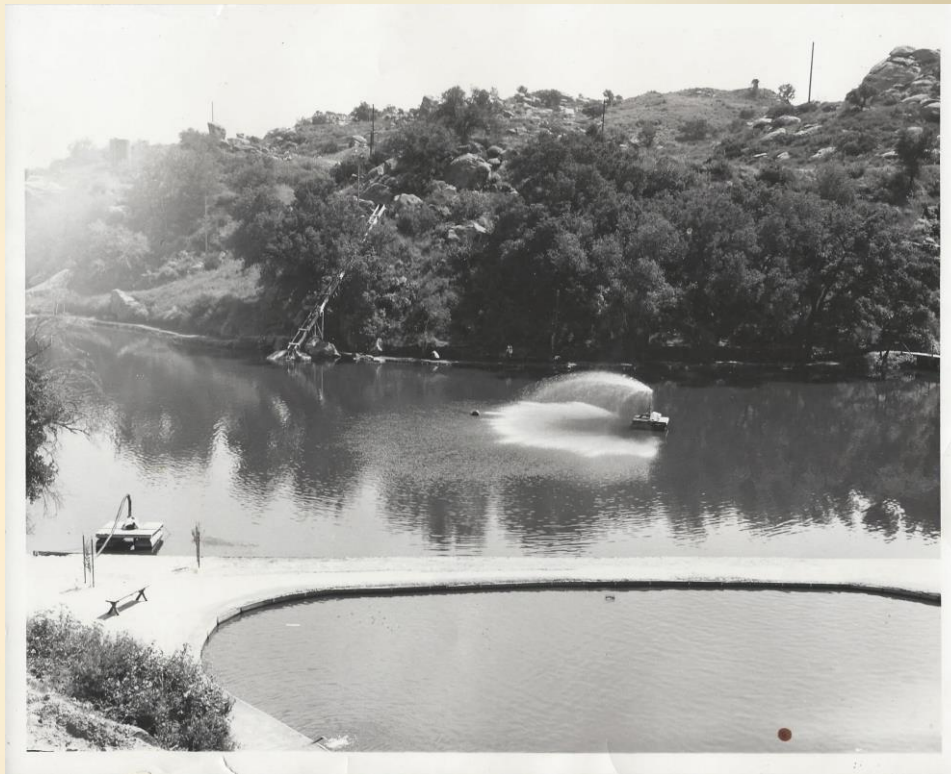
Palmer Trout Lakes Open Every Day 8 am 'til Dark

There was a Fishing Shed where they would rent poles, and they would clean your fish for you.

There was a small pond for the kids, and a larger pond for the adults.



1965  
Palmer Trout Lake -- Linda-10  
and Bob-8 Schneider with catfish



1962  
Palmer Trout Lake aeration pump installed about 1961

## Chatsworth Park South Reopens after 9-1/2 Years! (Source: [SSMPA Sept 2017 newsletter](#))

- Chatsworth Park South (City of LA), at the far west end of Devonshire Street, was closed **February 14, 2008**, because of **reported lead contamination on a portion of the acreage**.
- Remediation work (grading, storm water controls, capping the surface soil, and trails improvement, refreshing of park equipment, etc.) began in early **April 2016**.
- On **August 31, 2017**, after 3,485 days of closure, Los Angeles Department of Recreation and Parks along with City Council District 12 Officially Re-Opened Chatsworth Park South!

[2016-2017 Drone Timelapse of Chatsworth Park South Cleanup Larry Wolff](#) (2 min)

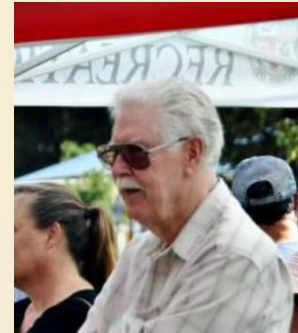
[2017-08-31 Chatsworth Park South Grand Re-Opening Mark Hovater](#) (16 min)

[2017-08-31 Opening Day Chatsworth Park South Cleanup Project Drone Flyover Larry Wolff](#) (3 min)



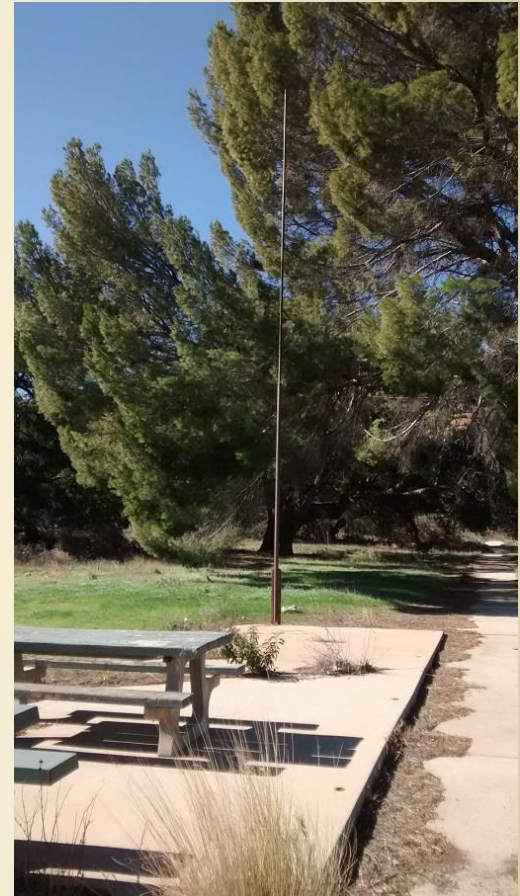
left: former SSMPA director Diana Dixon Davis advocates for reopening of Chatsworth Park South in 2012.

right: SSMPA director Bob Dager witnesses the Chatsworth Park South re-opening ceremony August 31, 2017.



# What remained of the Shotgun Range in 2016

- Concrete sidewalk behind the shotgun range stations
- Flagpole at clearing behind center shotgun station (also seen in 1959 Chevy commercial)



# What remains of the Shotgun Range in 2024

The same as 2016, after re-landscaping of Chatsworth Park South....



2024 - Google Maps aerial view of skeet sidewalk in red rectangle  
Gate to visit the sidewalk and flagpole circled in red



2024 - Ann standing on the skeet range sidewalk, leaning on the flagpole. View south through gate on horse trail.



Closeup of Ann

Next..... A 25-minute episode of  
the

Andy Griffith Show

"The Perfect Female"

Filmed at the Roy Rogers Sports  
Center (today's Chatsworth Park  
South)

1961, Season 2, Episode 8

Available on YouTube for  
purchase using Paramount Plus,  
or DVD set can be purchased  
from Amazon.

A four minute video clip of the  
episode showing skeet shooting is  
available at

<https://youtu.be/R3-ft8KXeUQ>



A 25-minute episode of  
the

Andy Griffith Show

"The Perfect Female"

Filmed at the Roy  
Rogers Sports Center  
(today's Chatsworth  
Park South)

1961, Season 2,  
Episode 8

A four minute video clip  
of the episode showing  
skeet shooting is  
available at

[https://youtu.be/R3-  
ft8KXeUQ](https://youtu.be/R3-ft8KXeUQ)

# Sources and Acknowledgements

- Again, many thanks to Ken Ditto, who helped us identify the features in the various historic aerals.
- The Presentation, Aqua Sierra and the Roy Rogers Sports Center Shooting Range, Golf Courses and Fishing Lakes - 1951 to 1969
- Dennis Liff matched the final shotgun scene to background rocks.
- Prepared by Ann & Ray Vincent in March 2024



**Any  
Questions?**